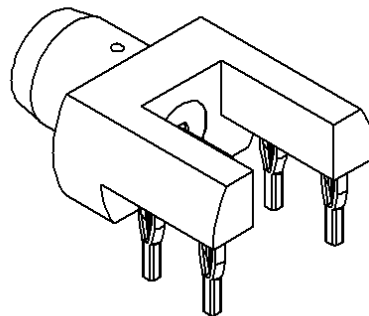
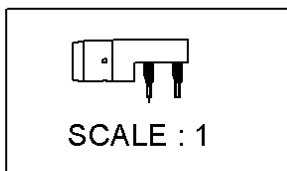
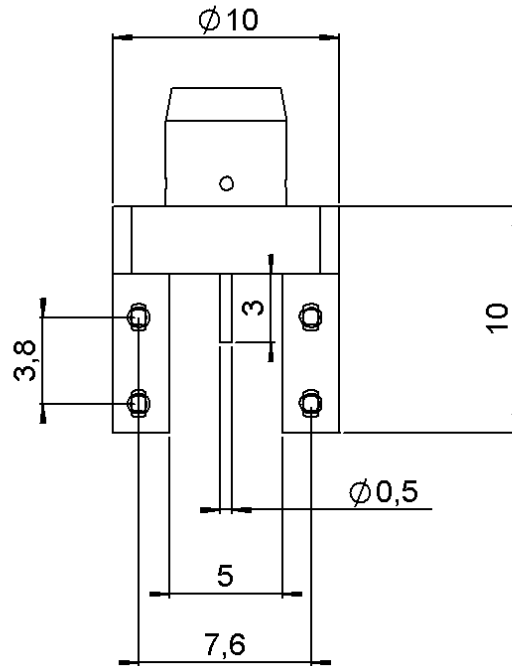
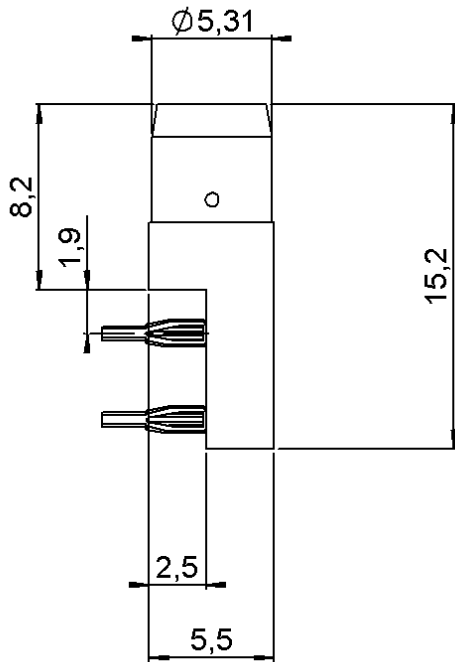


STRAIGHT RECEPTACLE PRESS FIT EDGE-CARD

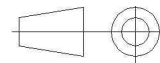
R128.405.161

PACK 100

Series : **BMA**



All dimensions are in mm.



COMPONENTS	MATERIALS	PLATINGS (µm)
BODY	BRASS	GOLD OVER NICKEL
CENTER CONTACT	BRASS	GOLD OVER NICKEL
OUTER CONTACT	-	-
INSULATOR	PTFE	-
GASKET	-	-
OTHERS PARTS	PHOSPHOR BRONZE	TIN 3 OVER NICKEL 2
.	.	.
.	.	.

Issue : 0713 D

In the effort to improve our products, we reserve the right to make changes judged to be necessary.



STRAIGHT RECEPTACLE PRESS FIT EDGE-CARD

R128.405.161

PACK 100

Series : **BMA**

PACKAGING

SPECIFICATION

Standard	Unit	Other
100	'W' option	Contact us

ELECTRICAL CHARACTERISTICS

ENVIRONMENTAL

Impedance **50** Ω
 Frequency **0-6** GHz
 VSWR **NA + 0,0000** x F(GHz) Maxi
 Insertion loss - √F(GHz) dB Maxi
 RF leakage - (- F(GHz)) dB Maxi
 Voltage rating **350** Veff Maxi
 Dielectric withstanding voltage **1000** Veff mini
 Insulation resistance **5000** MΩ mini

Operating temperature **-65/+125** ° C
 Hermetic seal **NA** Atm.cm3/s
 Panel leakage **NA**

OTHERS CHARACTERISTICS

Assembly instruction **NA**

Others :
 Temperature stockage :-40 / +85

MECHANICAL CHARACTERISTICS

Center contact retention
 Axial force – Mating end **27** N mini
 Axial force – Opposite end **8** N mini
 Torque **NA** N.cm mini

Recommended torque
 Mating **NA** N.cm
 Panel nut **NA** N.cm

Mating life **0** Cycles mini
 Weight **12,4440** g

Issue : 0713 D

In the effort to improve our products, we reserve the right to make changes judged to be necessary.



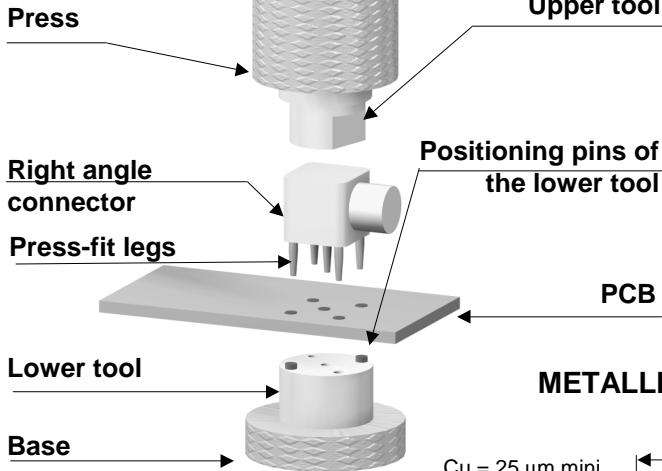
STRAIGHT RECEPTACLE PRESS FIT EDGE-CARD

R128.405.161

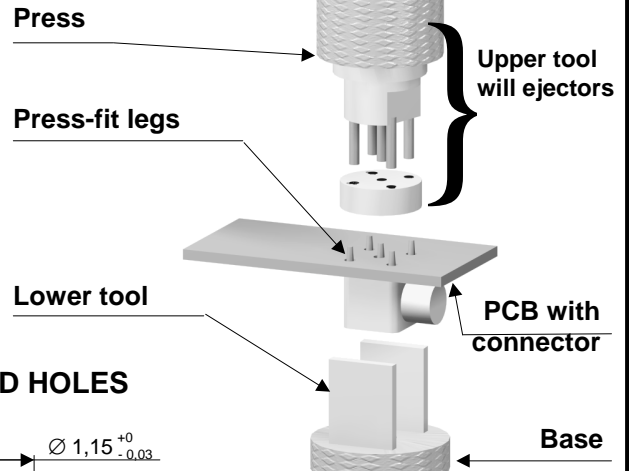
PACK 100

Series : BMA

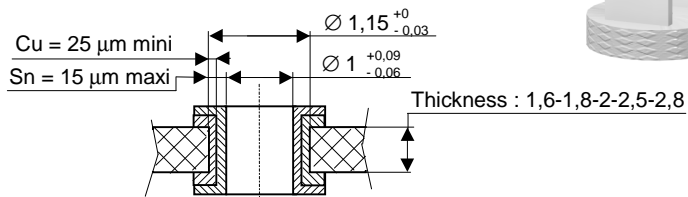
MOUNTING



UNMOUNTING

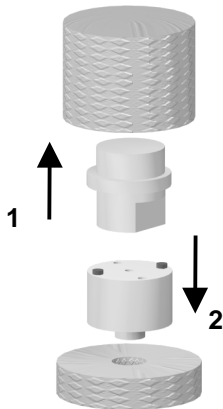


METALLIZED HOLES



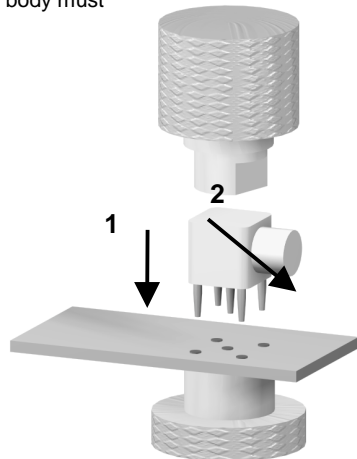
1

Slide the upper tool into the machine (press).
Slide the lower tool into the base.



2

Place correctly the PCB on the lower tool.
Introduce the press-fit legs into the holes of the PCB.
Push on top (100N mini per press-fit leg) until total insertion.
Note: the connector body must rest on the PCB.



3

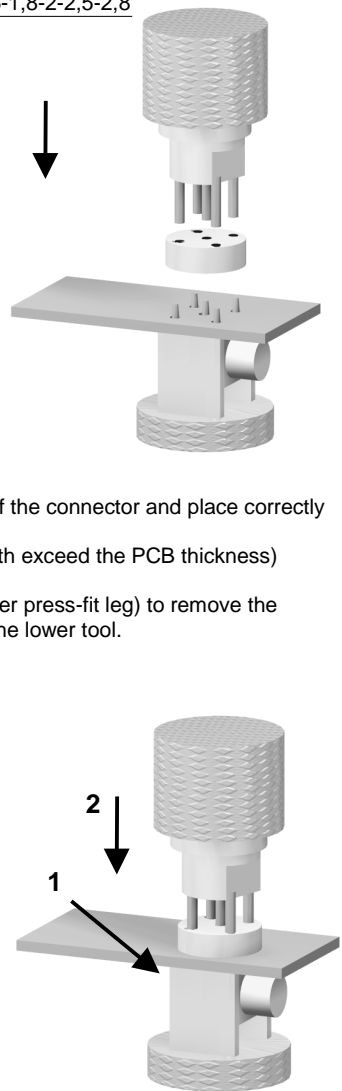
1

Place correctly the PCB
And the connector on the
Lower tool.

2

Place the upper tool at the back of the connector and place correctly the ejectors :
- on the press-fit legs (if their length exceed the PCB thickness)
- in the holes of the PCB (if not).
Press the upper tool (100N mini per press-fit leg) to remove the connector until it slide down into the lower tool.

CAUTION :
A plated hole of the PCB can be used up to 3 times.



Issue : 0713 D

In the effort to improve our products, we reserve the right to make changes judged to be necessary.

